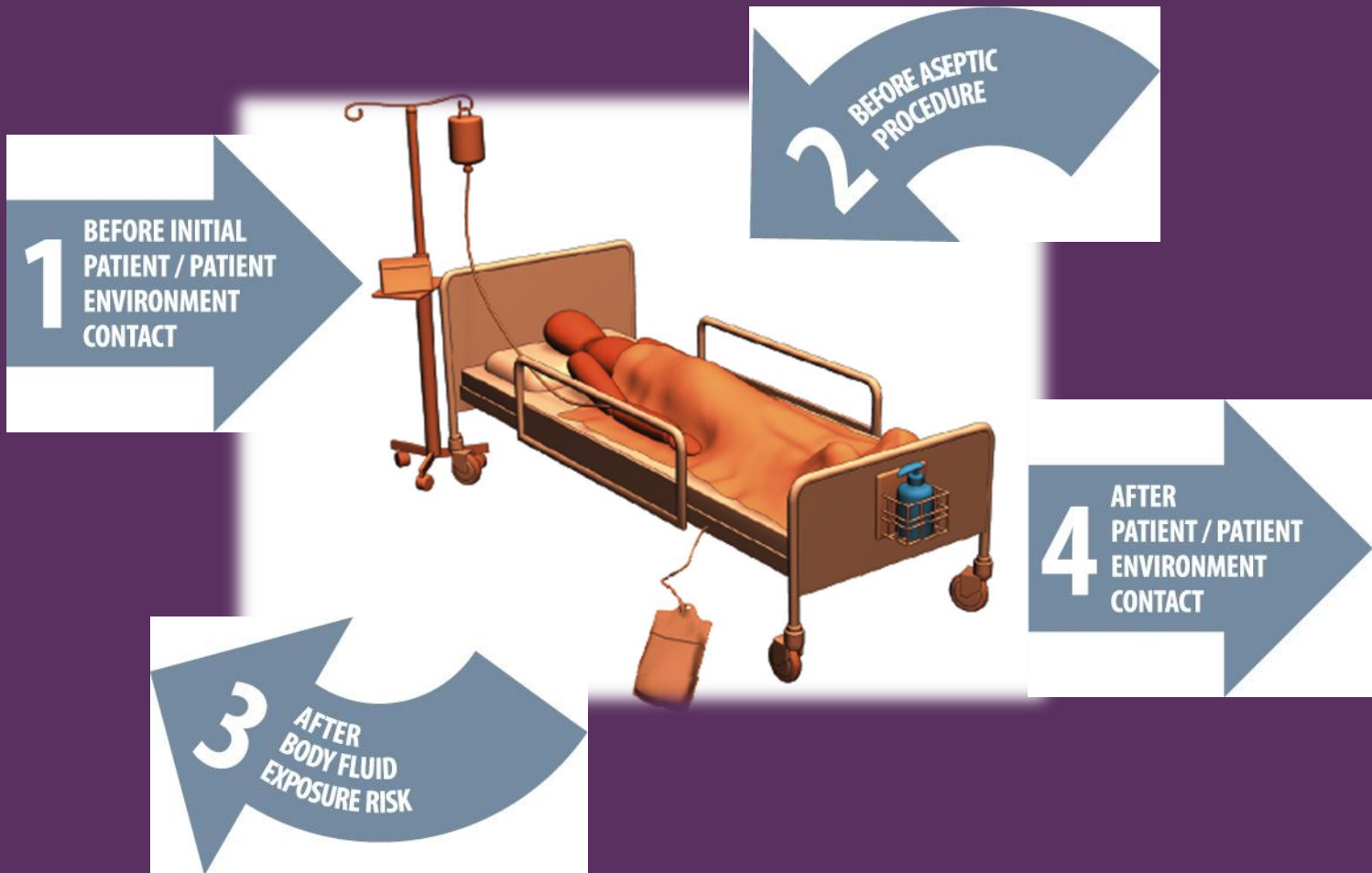


## Designated care partner



# Your 4 moments for Hand Hygiene



# HAND HYGIENE

Two Ways to  
Clean Hands

Alcohol-Based  
Hand Rub  
(ABHR)

Hand Washing  
with Soap and  
Water



70 % or higher  
Use HDGH supplies



# How to handrub

Rub hands for 15 seconds



1  
Apply 1 to 2 pumps of product to palms of dry hands.



2  
Rub hands together, palm to palm.



3  
Rub in between and around fingers.



4  
Rub back of each hand with palm of other hand.

Rub hands for 15 seconds



5  
Rub fingertips of each hand in opposite palm.



6  
Rub each thumb clasped in opposite hand.



7  
Rub hands until product is dry. Do not use paper towels.



8  
Once dry, your hands are safe.



JUST CLEAN  
YOUR HANDS





# How to handwash

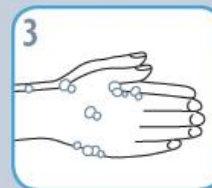
Lather hands for 15 seconds



Wet hands with warm water.



Apply soap.



Lather soap and rub hands palm to palm.



Rub in between and around fingers.

Lather hands for 15 seconds



Rub back of each hand with palm of other hand.



Rub fingertips of each hand in opposite palm.



Rub each thumb clasped in opposite hand.



Rinse thoroughly under running water.



Pat hands dry with paper towel.



Turn off water using paper towel.



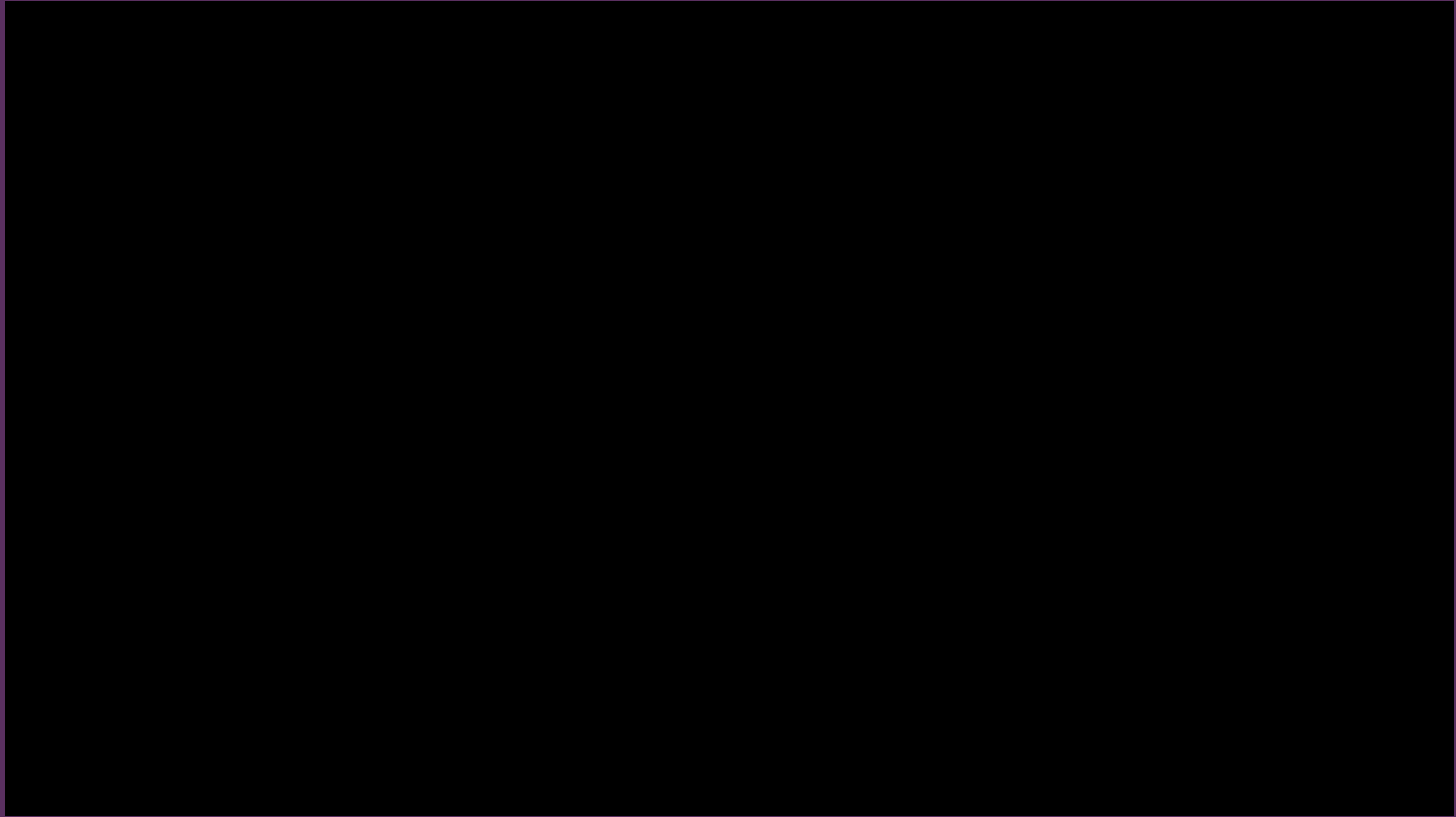
Your hands are now safe.



**JUST CLEAN  
YOUR HANDS**



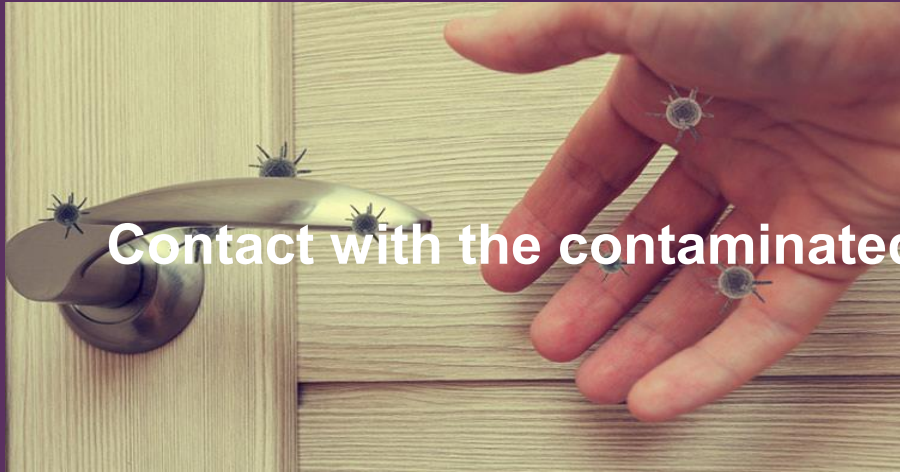
# What if bacteria were not invisible?



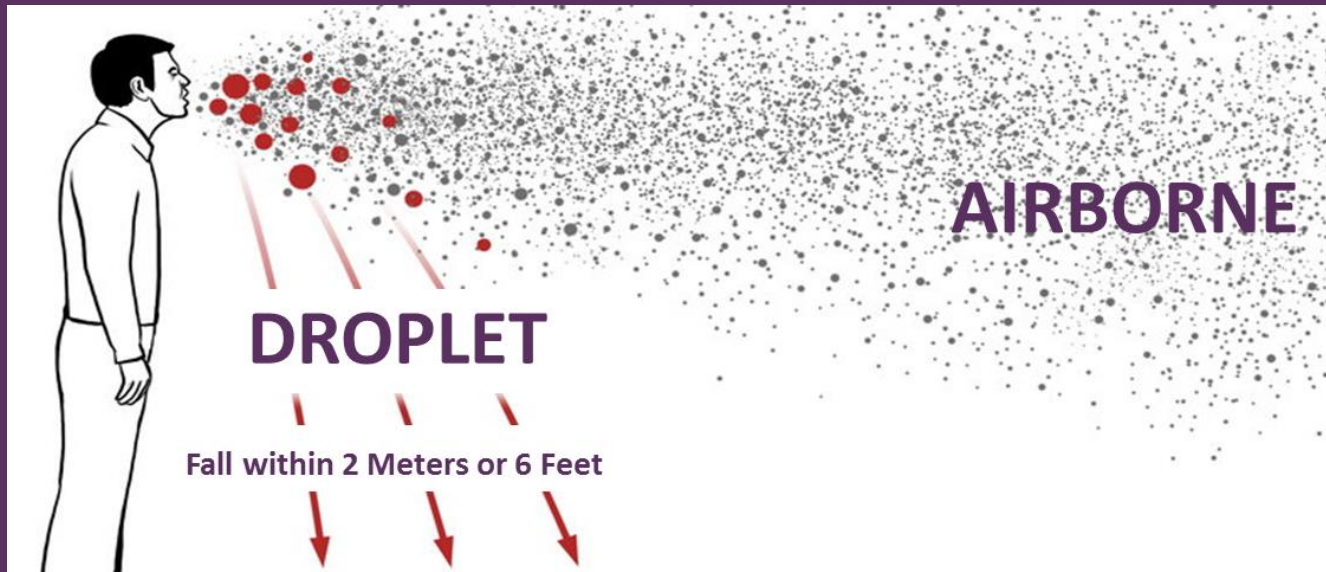
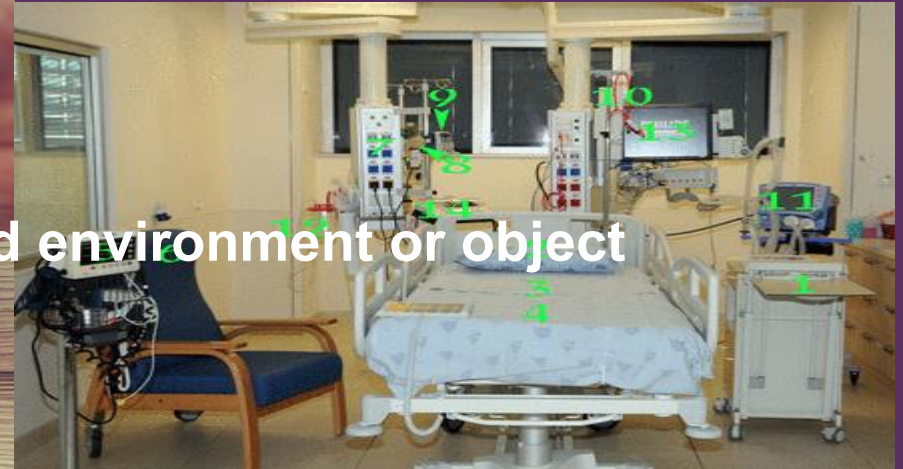
<http://www.youtube.com/watch?v=M8AKTACyiB0>



# Major routes Infections can spread:



Contact with the contaminated environment or object





# ADDITIONAL Precautions

Designed on the way the organism is *transmitted*.  
Are used *in addition* to Routine Practices



## STOP

### CONTACT PRECAUTIONS

ARE IN PLACE

- Clean your hands when entering and when leaving this room
- Perform a Personal Risk Assessment:
  - Gloves required for patient contact
  - Gown required if skin/clothing may contact the patient or their environment
- When transporting the patient:
  - Remove PPE (gloves and gown)
  - Clean your hands leaving the room
  - Allow the patient to clean their hands
- Use equipment dedicated for this patient only, when possible



## STOP

### SAFETY PRECAUTION



UPON EXITING THIS ROOM, PLEASE ENSURE TO **WASH YOUR HANDS WITH SOAP AND WATER AT THE NEAREST SINK.**

\*If you have any questions please speak to one of our staff.\*



## STOP

### DROPLET+CONTACT PRECAUTIONS

ARE IN PLACE

- Clean your hands when entering and when leaving this room
- Perform a Personal Risk Assessment:
  - Facial protection required within two (2) metres of the patient
  - Gloves required for patient contact
  - Gown required if skin/clothing may contact the patient or their environment
- When transporting the patient:
  - Provide the patient a procedure mask
  - Remove PPE
  - Clean your hands leaving the room
  - Allow the patient to clean their hands
- Use equipment dedicated for this patient only, when possible

\*If you have any questions please speak to one of our staff.\*



## STOP

### AIRBORNE PRECAUTIONS

ARE IN PLACE

- Clean your hands when entering and when leaving this room
- N95 respirator (mask) required for room entry:
  - N95 user must have been fit-tested for appropriate N95 size
  - Perform a seal-check:
    - Ensure no air leaks between the mask and your face
- Only transport the patient if necessary:
  - Staff to wear N95 during transport
  - Provide the patient with a procedure mask
  - Allow the patient to clean their hands
- Door must remain closed. Negative pressure recommended.

\*Please speak to one of our staff.\*




## STOP

### DROPLET PRECAUTIONS

ARE IN PLACE

- Clean your hands when entering and when leaving this room
- Perform a Personal Risk Assessment:
  - Facial protection required within two (2) metres of the patient
- When transporting the patient:
  - Provide the patient a procedure mask
  - Remove PPE
  - Clean your hands leaving the room
  - Allow the patient to clean their hands



## STOP

### ENHANCED DROPLET+CONTACT PRECAUTIONS

ARE IN PLACE

- Clean your hands when entering and when leaving this room
- Perform a Personal Risk Assessment:
  - Facial protection required within two (2) metres of the patient
  - Gloves required for patient contact
  - Gown required if skin/clothing may contact the patient or their environment
- When transporting the patient:
  - Provide the patient a procedure mask
  - Remove Gloves & Gown
  - Clean your hands leaving the room
  - Allow the patient to clean their hands
- N95 Respirator **required** for Aerosol Generating Medical Procedures

\*If you have any questions please speak to one of our staff.\*



## STOP

### AEROSOL PROCEDURE

IN PROGRESS



Fit tested N95 respirator (mask) is required for room entry and door must remain closed.





# GOWNS



# Personal Protective Equipment

## DONNING (Putting ON PPE)

### PUTTING ON PERSONAL PROTECTIVE EQUIPMENT

1

PERFORM HAND  
HYGIENE



2

PUT ON GOWN



3

PUT ON MASK OR  
N95 RESPIRATOR



4

PUT ON EYE  
PROTECTION



5

PUT ON GLOVES



## DOFFING (taking OFF PPE)

### REMOVING PERSONAL PROTECTIVE EQUIPMENT

1

REMOVE GLOVES



2

REMOVE GOWN



3

PERFORM HAND  
HYGIENE



4

REMOVE EYE  
PROTECTION



5

REMOVE MASK OR  
N95 RESPIRATOR



6

PERFORM HAND  
HYGIENE



# GOWN and GLOVE DISPENSER





# Removing/Changing Gowns

- A gown must be taken off (doffed) every time you exit the patient's room, even for bathroom breaks
- Gowns are to be worn in patient's room only
- Please take a new gown upon entering or re-entering patient's room

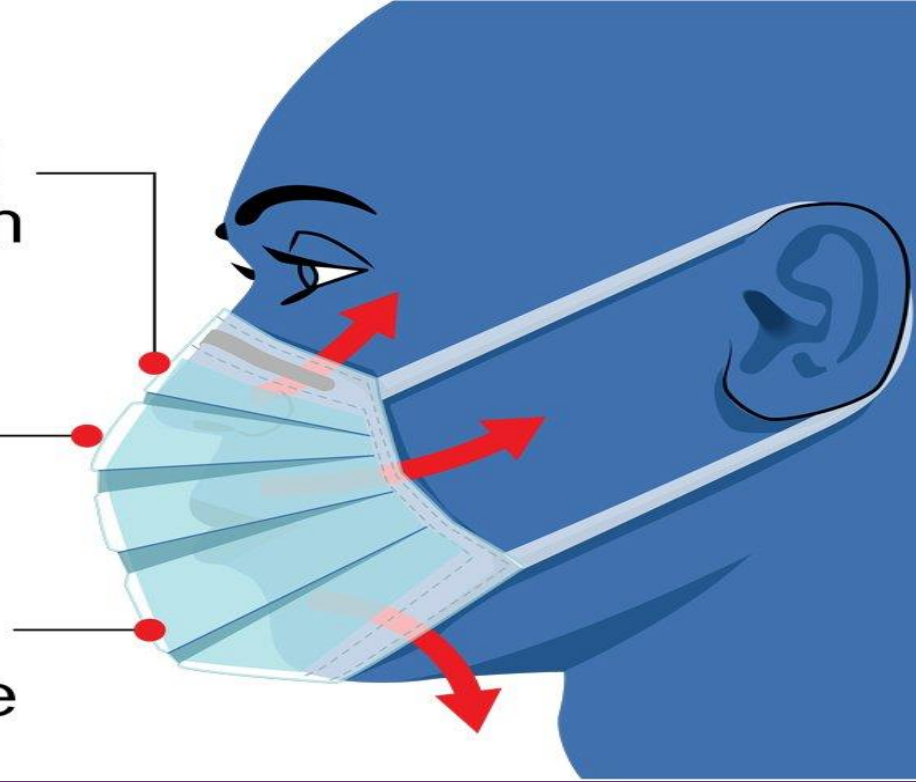


# The surgical mask

Loosely fits around  
nose and mouth

Protects wearer from  
splashes and some  
virus-containing droplets

Helps catch infected  
droplets that escape the  
wearer's mouth or nose



# Getting a mask





# Visor/Face Shield



# Designated Care Partner Personal Protective Equipment while on HDGH Campus

- A mask must be worn at all times, inside and outside, on hospital campus.
- A visor/face shield is to be worn at all times (in addition to the mask) when inside hospital buildings.
- Please wear a mask to and from your vehicle
- Put your visor/face shield on as soon as you enter the building
- Please sanitize your visor when leaving the building (1 minute dry time to be effective)



# Visor Care

Bring it with you  
each visit

Keep it clean, wipe  
it down after use

Wash your hands  
before taking the  
visor off

Store your visor in  
clean storage bag





# Sanitize Station for Visor



# Only get Canadian information from good sources

The image displays three overlapping screenshots of Canadian public health websites, illustrating reliable sources for COVID-19 information.

**Top Left: Windsor-Essex County Health Unit (wechu.org)**  
The website features a navigation bar with links like Home, About Us, Jobs, Events, Forms, Newsroom, Reports, Inspections, and Contact Us. The main header includes the WECHU logo and the text "WINDSOR-ESSEX COUNTY HEALTH unit" and "Bureau de santé de Windsor-comté d'Essex". A large banner for "COVID-19" states: "The WECHU is committed to providing timely and credible information to the community of Windsor-Essex." Below the banner are buttons for "About COVID-19", "Restrictions & Guidance", and "FAQ".

**Top Right: Public Health Ontario (publichealthontario.ca)**  
The website has a navigation bar with "Public Health Ontario" and "Santé publique Ontario" logos. A cookie notice is visible. A red banner for "COVID-19" contains a warning icon and text: "If you are concerned that you may have been exposed to, or are experiencing symptoms of COVID-19, please start by visiting the Ministry of Health website and taking their self-assessment. Do not call 911 unless it is an emergency." Below this is a large image of a coronavirus particle and a button labeled "Read more".

**Bottom Left: Public Health Agency of Canada (canada.ca/en/public-health.html)**  
The website has a "MENU" dropdown. The main heading is "Public Health Agency of Canada". The text describes the agency's mission: "The Public Health Agency of Canada empowers Canadians to improve their health. In partnership with others, its activities focus on preventing disease and injuries, promoting good physical and mental health, and providing information to support informed decision making. It values scientific excellence and provides national leadership in response to public health threats." It also mentions: "We are a federal institution that is part of the Health portfolio." A "Latest" section features a graphic of coronavirus particles and a link to a "COVID-19 update (June 5, 2020) - Ministers and Government of Canada officials to hold a news conference on coronavirus disease" dated [2020-06-05 07:58].

**Bottom Right: Hôtel-Dieu Grace Healthcare (Hôtel-Dieu Grace Healthcare)**  
The website features a logo with a cross and the text "HÔTEL-DIEU GRACE HEALTHCARE ESTÉ 1888". A navigation bar includes links for "PATIENT INFORMATION", "ABOUT", "PROGRAMS & SERVICES", "RESEARCH", "CONTACT US", "DONATE", and "FOUNDATION". A large banner for "CORONAVIRUS (COVID-19)" features a close-up of a person wearing a blue surgical mask. The text on the banner reads: "WHAT YOU NEED TO KNOW & HOW HDGH IS TAKING PRECAUTIONARY MEASURES".

# Questions?





# References

- Google Images (2014)
- Provincial Infectious Diseases Advisory Committee (PIDAC) Best Practice Documents
- PIDAC ROUTINE PRACTICES ADDITIONAL PRECAUTIONS IN ALL HEALTHCARE SETTINGS NOVEMBER 2012.APPENDIX L: RECOMMENDED STEPS FOR PUTTING ON AND TAKING OFF PERSONAL PROTECTIVE EQUIPMENT (PPE)
- [Images developed by Kevin Rostant. Some images adapted from Northwestern Ontario Infection Control Network – NWOICN]
- [http://www.publichealthontario.ca/en/BrowseByTopic/InfectiousDiseases/PIDAC/Pages/PIDAC\\_Documents.aspx](http://www.publichealthontario.ca/en/BrowseByTopic/InfectiousDiseases/PIDAC/Pages/PIDAC_Documents.aspx)

